

Fluke Insulated Hand Tools



Fluke Insulated Screwdrivers

Precision insulated tools fit and rip the fastener properly to apply maximum torque without damage to the head. Hardened chromium-molybdenum-vanadium steel blades minimize wear. Fluke offers three styles and multiple sizes—seven drivers in all. All certified to 1000 Volts AC and 1500 V DC. Every screwdriver individually tested to 10000 volts.

- Ergonomic handle adapts to the user's hand, causing less strain and work fatigue and providing maximum torque
- The full length, impact-proof handle core is coated with soft-grip outer material and has a hanging hole for extra security and an anti-roll handle design
- The slim insulated shaft allows access in hard to reach areas
- All blades are manufactured from German CMV steel for superior durability

Fluke Insulated Pliers and Cutters

Fluke insulated pliers and cutters give you a range of options when the job requires jaws with bite. All Fluke pliers and cutters are built with German CMV steel.

Long Nose Pliers



- Unique milled wave pattern gripping zones
- Straight, half-round, long and slim knurled jaws, specially profiled
- Side cutting edge for wire cutting

Heavy-Duty, High-Leverage Diagonal Cutter



- Cuts hard materials including steel and piano wire
- Power joint and precision cutting edges

Fast Adjust Pump Pliers

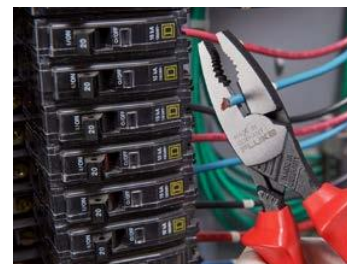


- 27 jaw adjustment steps for more accurate gripping of the workpiece with less slippage than other designs
- Self-locking on pipes and nuts: no slipping on the workpiece, with low hand force required
- Gripping surfaces with teeth hardened to HRC61 for low wear and reliable gripping
- Box-joint design; high stability because of double guide
- Pinch guard that prevents operators' fingers from being pinched

Heavy Duty Combination Pliers



- Secure hold by aggressive serrated jaws and 4-point gripping hole
- Slim shape for better access to wires in tight spaces
- Powerful gripping jaw, yet 20% lighter weight than other designs



Insulated Hand Tools

Ordering Information

ISLS3	Insulated Slotted Screwdriver 3/32x3 in, 2.5 mm x 75 mm, 1000V
ISLS5	Insulated Slotted Screwdriver 5/32x4 in, 4 mm x 100 mm, 1000V
ISLS8	Insulated Slotted Screwdriver 1/4x5 in, 6 mm x 125 mm, 1000V
IPHS1	Insulated Phillips Screwdriver #1, 3 in, 75 mm, 1000V
IPHS2	Insulated Phillips Screwdriver #2, 4 in, 100 mm, 1000V
ISQS1	Insulated Squared Screwdriver #1, 4 in, 100 mm, 1000V
ISQS2	Insulated Squared Screwdriver #2, 5 in, 125 mm, 1000V
INLPS	Insulated Long Nose /w Side Cutter, 8 in, 200mm, 1000V
INDCS	Insulated High Leverage Diagonal Cutter, 8 in, 200mm, 1000V
INPP10	Insulated Pump Plier Fast adjustable, 10 in, 250 mm, 1000V
INCP8	Insulated Linesman Combination Plier, 8 in, 200 mm, 1000

Contact your local distributor for price and availability.
fluke.com/wtb

